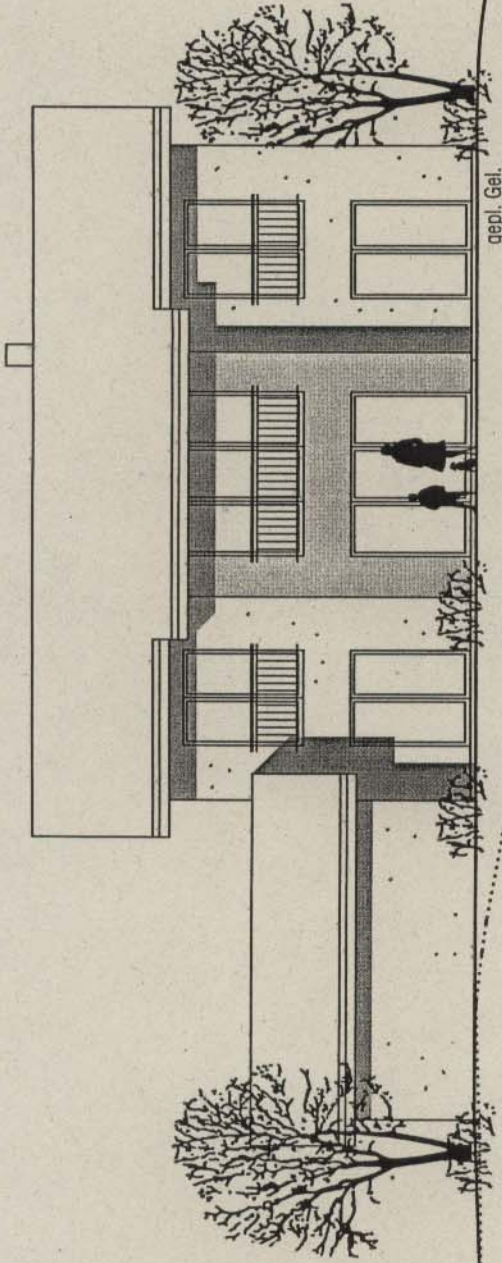


# BAUGESUCH

EINFAMILIENHAUS  
BREMHHAG

C. + G. HENNINGER  
RAVENSBURG-TALDORF



gepl. Gel.

Grenze

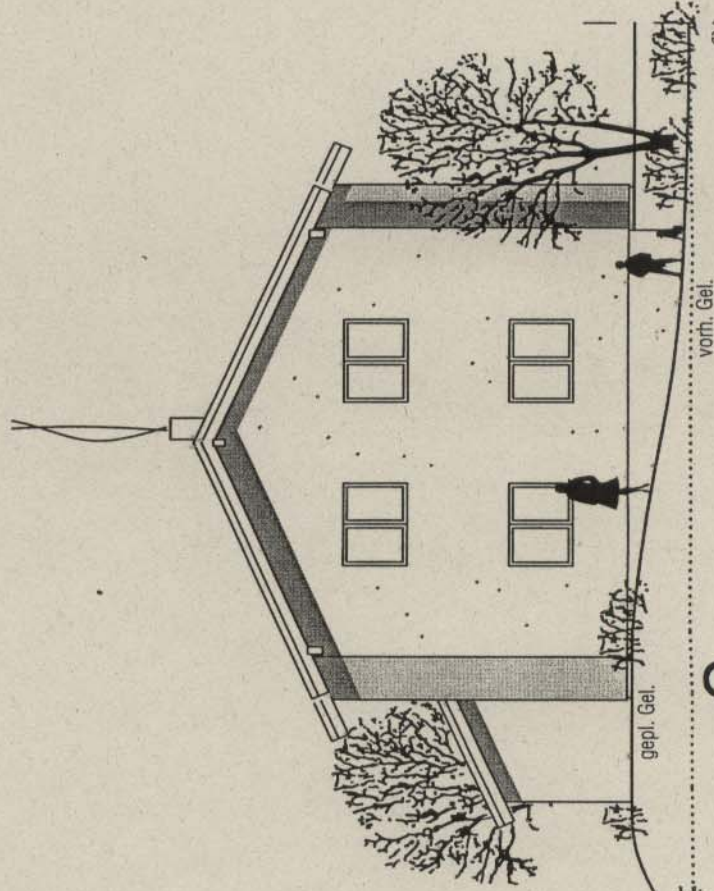
S

vorn. Gel.

Kaminreinigung über Dach

25 GRAD

Grenze

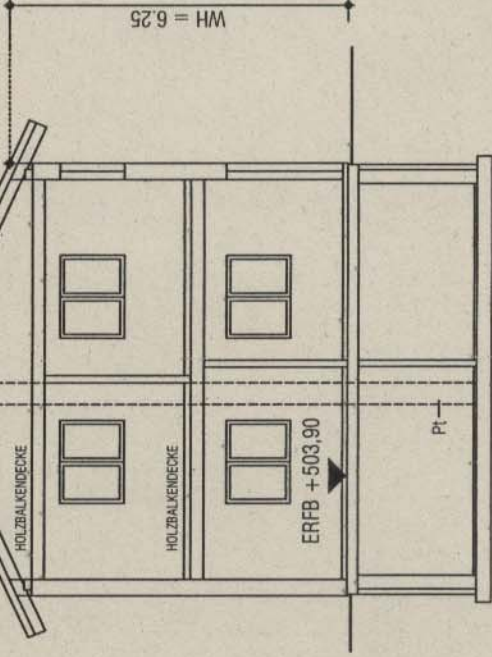


gepl. Gel.

Geländeanpassung  
in Abstimmung  
mit Nachbar

vorn. Gel.

82



WH = 6.25

HOLZBALKENDECKE

HOLZBALKENDECKE

ERFB + 503,90

Pl

25.1 5/11 2.20/2.14 18 16 2.51 2.79 16 2.51 2.79 2.94<sup>9</sup> 2.94<sup>9</sup> 2.43 2.23<sup>8</sup>

S1

M 1:100

21.3.07

*Henning-Gröb*  
*Hentner* *Therese Anika*  
Bauherr