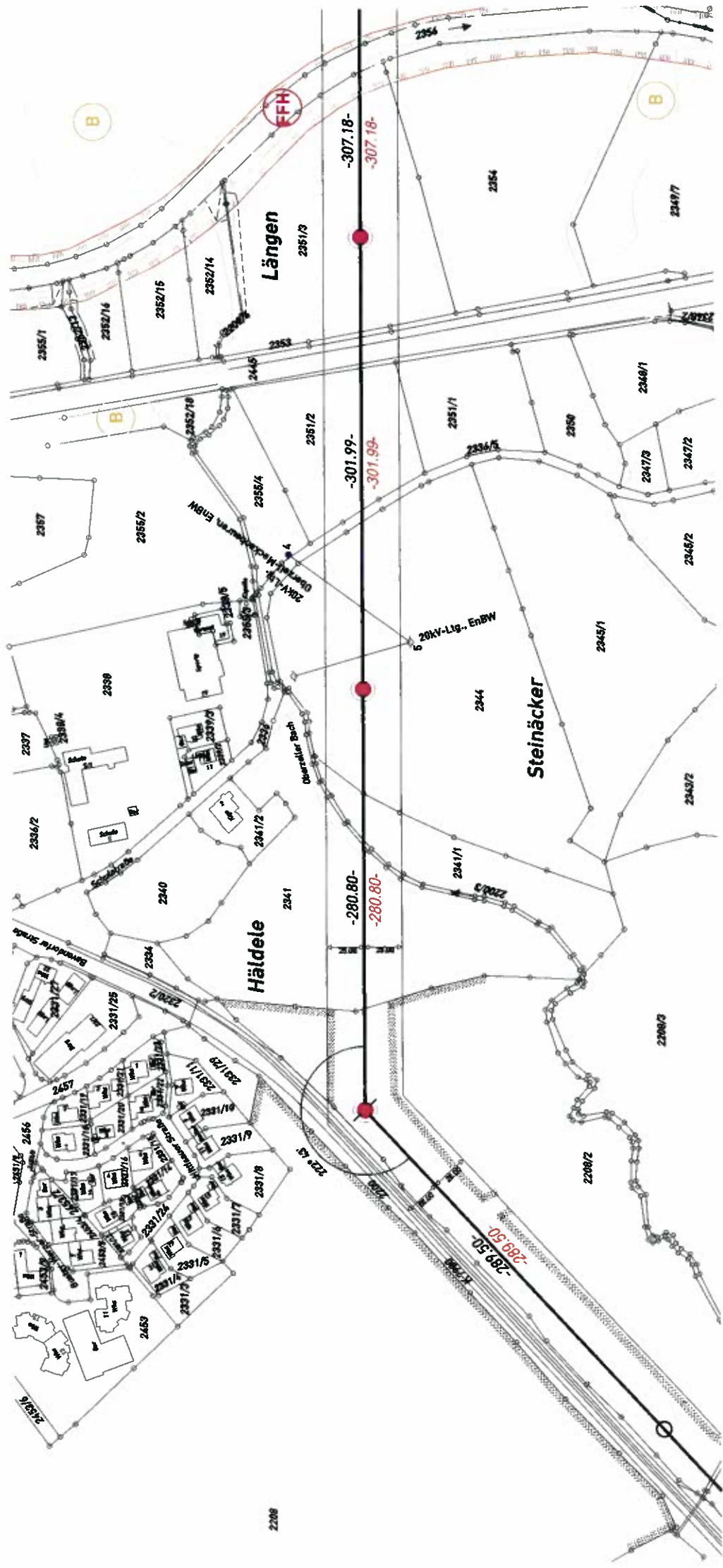


35
Ts +10 M2
35A
TO 25.0

34
WAS 3 +2
34A
WAS 19.0

33
Ts 44

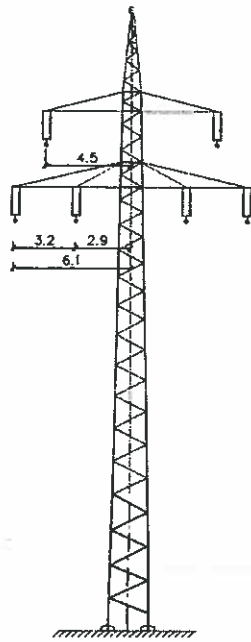
aldorf



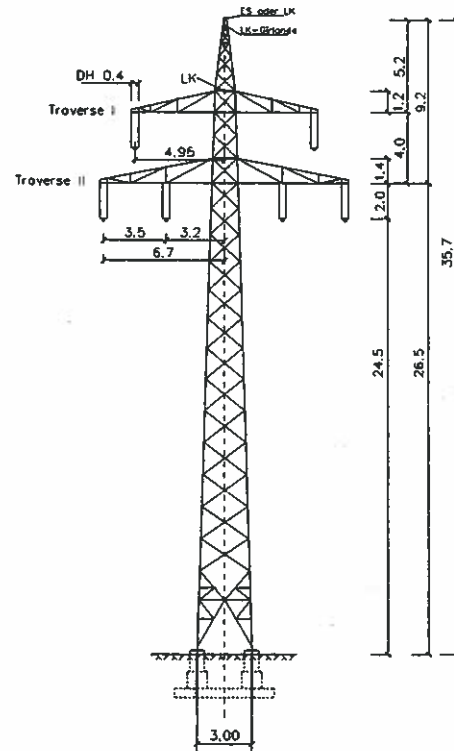
aldorf

Gei

alter Mast
Ts +8 M1
A 1 s



neuer Mast
TD 24,5
A27-2006



EnBW

Masttypenvergleich

● SAG GmbH
● CeGIT

gefertigt: 29.09.10
SAG/ Krellmann

Maßstab 1:400~

A27-2006 TD 24,5