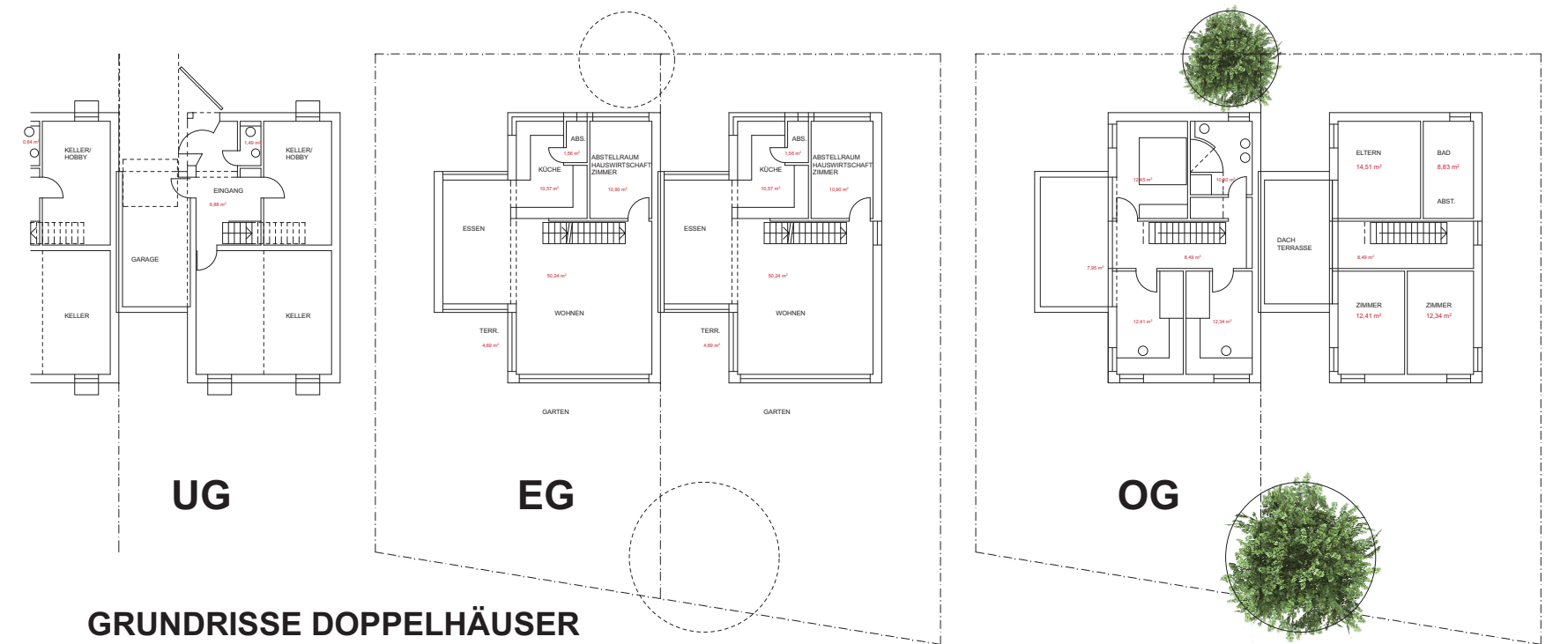
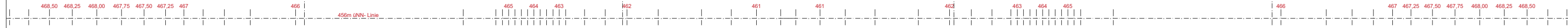
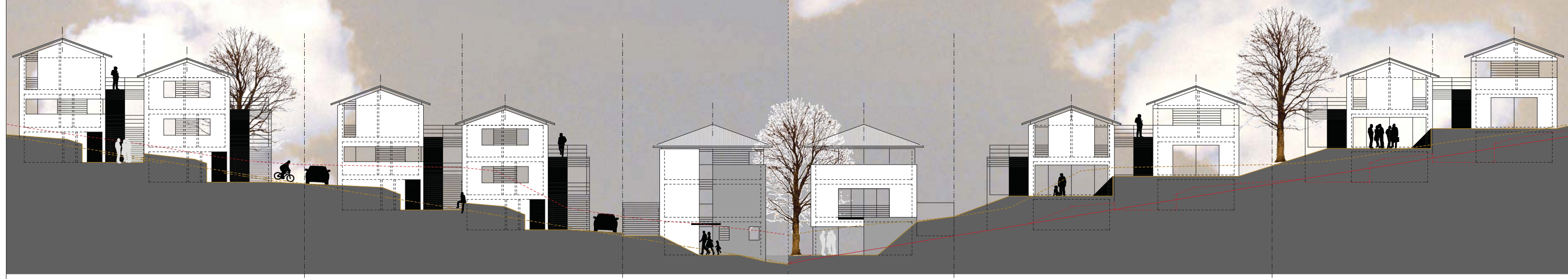
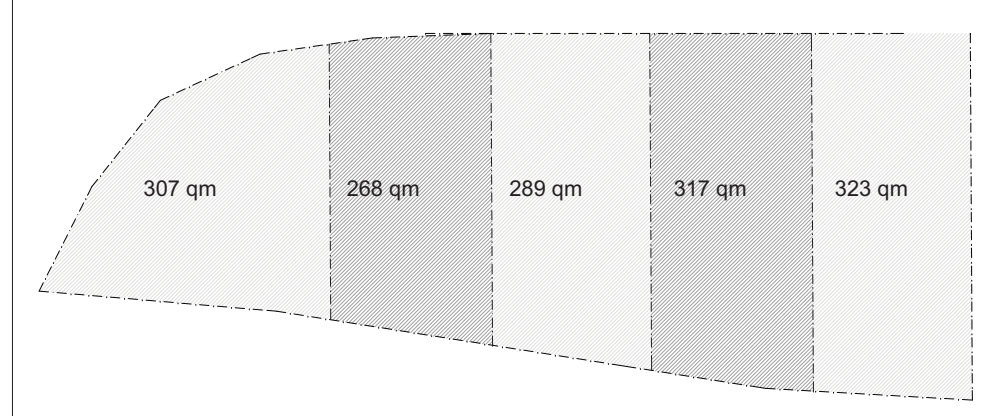


FASSADENABWICKLUNG NORD

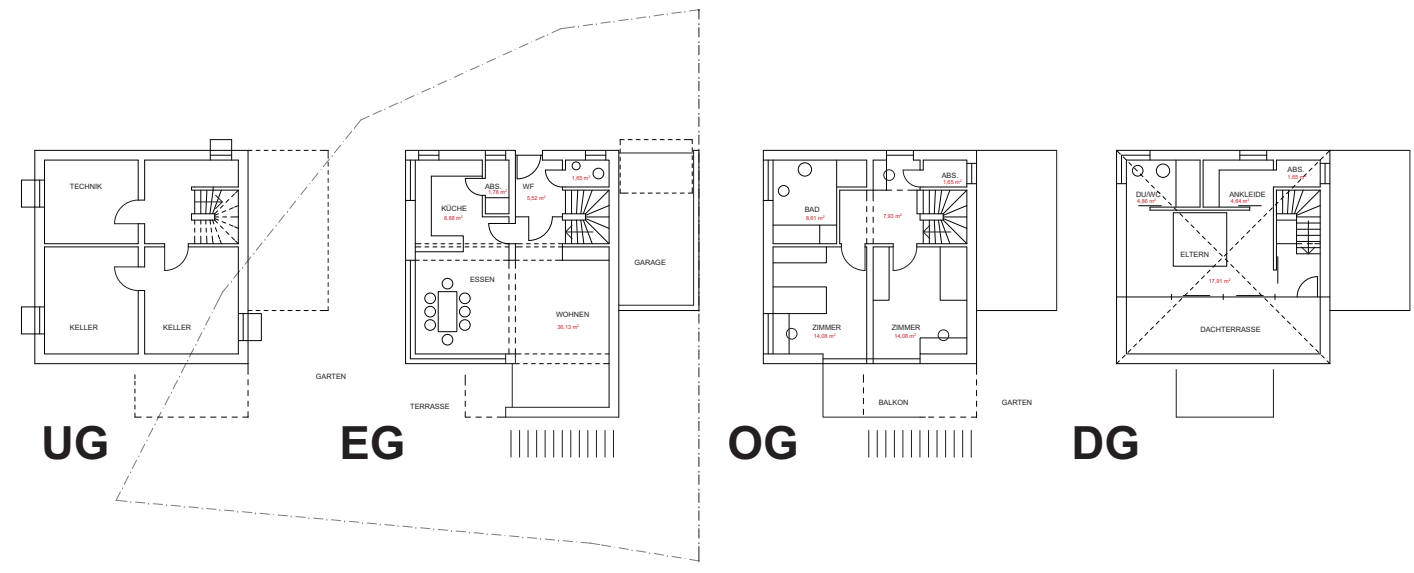
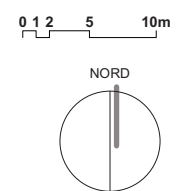
FASSADENABWICKLUNG SÜD



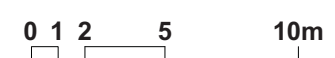
GRUNDRISSE DOPPELHÄUSER



LAGEPLAN UND GRUNDSTÜCKE M. 1: 200



GRUNDRISSE EINFAMILIENHAUS



VORHABEN- UND ERSCHLIESSUNGSPLAN

"WEINBERGWEG 2" - ZfP

VORHABENTRÄGER:			
ZENTRUM FÜR PSYCHOTRIE DIE WESSENHAU			
PLANVERFASSTER:			
TIL STAMPER, FR. ARCHITECTURE AG.			
STADTPLANUNGSAMT:			
DUNNENBERG			
MASSTAB	DATUM	ÄND.	REG. NR.
1:100	09.05.2008	/ 29.09.2008 / 24.06.2008	

